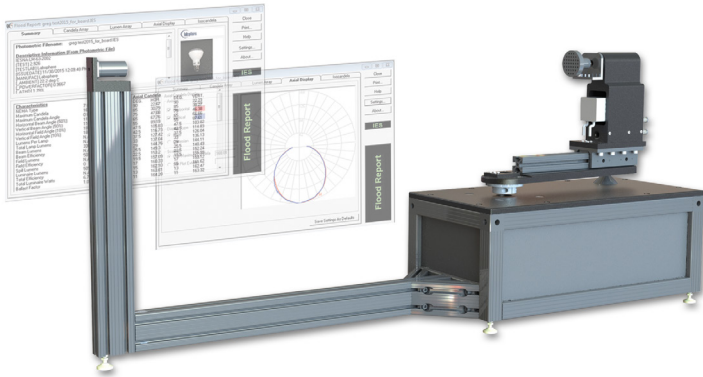


Benchtop Goniospectrometer

Save Money and Time with In-House Testing



Specifications

Measurement Method: Far Field
Ordinate System: Type C
Axis: 2 Axis Fully Automated
Device Limit Size: 30cm dia x 22cm length
Max Lamp Weight: 5 kg
Sensor Distance: 1 m
Spectral Range: 380 - 780 nm
Intensity Range (cd): 1 to >50000
Color Temperature: 1000 K to 10,000 K +/-35 K
Angular Resolution: 0.1 degree /step
Calibration Source: Included
Data Format: *.IES and Microsoft Excel
Customer Installation and Training Services
Machine Dimensions:
165.3 cm x 60.8 cm x 173.2 cm (65" x 24" x 68")
Weight: 100 kg

Value

Cut Development Time by 1/3
Keep Control of Your IP
Operator Level Expertise Only

Measure

Lumen
Peak Candela
CCT
CRI
Beam Angle
Power
Power Factor
Lumen/Watt

Options

Calibration Source Kit
AC Power Supply
DC Power Supply
Power Analyzer
Extended Warranties
Arm Extensions

A screenshot of the software interface for the Benchtop Goniospectrometer. The interface is dark-themed and contains various input fields and checkboxes. At the top, there are fields for 'Lamp model', 'Part number', and 'Serial number'. Below these are fields for 'Color', 'Shape', 'Size', and 'Butt'. A 'Specification' section includes 'VAC' (0), '50 Hz' and '60 Hz' radio buttons, 'VDC' (0), and 'Amps' (0). There are also fields for 'Warm up' (Min, Sec, On, Off) and 'Test cycle' (On, Off, Offsets, L-R, UID). A 'Comment' field is present. The 'Measurements' section has checkboxes for 'Cd', 'Candela Cd', 'x, y', 'u, v', 'u', v', 'CCT', 'AE (u,v)', and 'Use Spectrometer'. A 'Cd Threshold' field is set to 10. The 'Boundaries' section has fields for 'Maximum expected Cd', 'Up', 'Down', 'Left', and 'Right'. The 'Increment (degrees)' section has fields for 'X (L-R)' and 'Y (U-D)'. A 'Start' button is checked, and a 'Stop' button is unchecked. There are also 'Flagged' and 'Error' indicators at the bottom.